

ScopeMeter® Test Tools

Oscilloscopes for field applications

Features



The ScopeMeter 190 Series of high-end performance oscilloscopes have bandwidth of 60, 100 and 200 MHz and sample rates up to 2.5 GS/s. The 190C Series adds a high-resolution color display that has a fast update rate, waveform pass/fail testing and a digital persistence mode – making the analysis of complex and dynamic signals much easier.

For industrial electronic or electro mechanical applications, the 120 Series Industrial ScopeMeter, with a 20 or 40 MHz bandwidth and Connect-and-View™ triggering for an instant, stable display will get the job done.

	199C	196C	199B	196B	192B	125	124	123
Oscilloscope Features								
LCD Display	Color		B/W			B/W		
Persistence	Digital		●	●	●			
Waveform reference	●	●	●	●	●			
Automatic pass fail testing	●	●						
Cursors and zoom	●	●	●	●	●	Cursors	Cursors	
Connect-and-View Triggering	●	●	●	●	●	●	●	●
Video triggering with line count	●	●	●	●	●	●	●	●
Selectable pulse width triggering	●	●	●	●	●			
Capture and replay of last 100 screens	●	●	●	●	●			
Dual Input TrendPlot	With cursors and zoom					●	●	●
Memory for screens and setups	10 screens and setups					20	20	10
Recorder memories, each can store 100 scope screens, a ScopeRecord or a TrendPlot	2 recorder memories							
1000V Independently floating isolated inputs	●	●	●	●	●			
Meter measurements: VAC RMS, VAC+DC, VDC, Ohms, Continuity, Diode, Amps, Temp. (°C, °F)	●	●	●	●	●	●	●	●
Waveform mathematics: A + B, A - B, A x B, A versus B (X-Y-mode)	●	●	●	●	●			
Frequency Spectrum Analysis using FFT	●	●						
Power measurements and V_{pwm}	●	●	●	●	●	●		
Capacitance and frequency measurements	-/●	-/●	-/●	-/●	-/●	●/●	●/●	●/●
Bus Health Test function						●		
Rugged, Dust and drip proof case.	●	●	●	●	●	●	●	●
PC and Printer Interface via optically isolated RS-232/USB cable	1)	1)	1)	1)	1)	1)	1)	1)
FlukeView® for Windows® Software (SW90W)	1)	1)	1)	1)	1)	1)	1)	1)

● Standard equipped 1) Optional

Specifications

(Check the Fluke web for detailed specifications)

	199C	196C	199B	196B	192B	125	124	123
Oscilloscope Specifications								
Bandwidth	200 MHz	100 MHz	200 MHz	100 MHz	60 MHz	40 MHz		20 MHz
Maximum real time sample rate	2.5 GS/s	1 GS/s	2.5 GS/s	1 GS/s	500 MS/s	25 MS/s		
Input sensitivity	2 mV to 100 V/div		5 mV to 100 V/div			5 mV-500 V/div		
Timebase range	5 ns/div to 2 min/div				10 ns/div to 2 min/div	10 ns/div to 1 min/div		20 ns/div to 1 min/div
Inputs and digitizers	2 plus external trigger/DMM input							
Independently floating isolated inputs	Up to 1000 V between inputs, references and ground							
Max. record length	3,000 points per input					512 min/max points per input		
... in Scope mode:	27,500 points per input or more (5 ns/div...2 min/div.)							
... in ScopeRecord mode:	Up to 3 ns using Pulse Width triggering; 50 ns peak detect at 5 μs/div. to 1 min/div.							
Glitch capture	40 nsec					26 automatic		
Scope measurements	7 cursor+30 automatic, incl. power and V_{pwm}					cursors + 26 automatic		26 automatic
						plus power measurements and V_{pwm}		
True RMS multimeter	5000 counts, single input					5000 counts, dual input		
General Specifications								
Line Power	Adapter/Battery charger included							
Battery power	4 hours NiMH					7 hours NiMH		
Size	256 x 169 x 64 mm					232 x 115 x 50 mm		
Weight	2 kg					1.2 kg		
Safety certified (EN61010-1)	1000 V CAT II/600 V CAT III					600 V CAT III		
Warranty	3 years					3 years		

Check the Fluke web site for Technical Specifications and Application Notes for the Fluke ScopeMeters



ScopeMeter® 190 Series



Fluke 199C



Fluke 196C



Fluke 199B



Fluke 196B



Fluke 192B

Speed, performance and analysis power

For more demanding applications, the ScopeMeter 190 Series high performance oscilloscopes offer specifications usually found on top-end bench instruments. With up to 200 MHz bandwidth, 2.5 GS/s real-time sampling and a deep memory of 27500 points per input they're ideal for engineers who need the full capabilities of a high performance oscilloscope in a handheld, battery powered instrument.

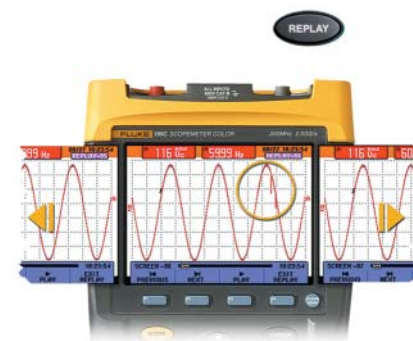
- Dual input – 60, 100 or 200 MHz models
- Up to 2.5 GS/s real time sampling per input
- Choice between a high resolution Color or Black and White display
- See even more detail than before. The Fluke ScopeMeter 190 family is now twice as fast with >100/second trace updates rates.
- High waveform resolution of max. 3000 datapoints per channel
- Digital Persistence for analyzing complex dynamic waveforms like on an analog scope (190C Series only)
- Fast display update rate for seeing dynamic behavior instantaneously
- Connect&View™ automatic triggering, a full range of manual triggering modes plus external triggering.
- Automatic capture and replay of 100 screens
- 27500 points per input record length using ScopeRecord mode
- Up to 1000 V independently floating isolated inputs
- Waveform reference for visual comparisons and automatic pass/fail testing of waveforms (190C Series only)
- V_{pwm} function for motor drive and frequency inverter applications.
- Waveform mathematics: Add, Subtract and Multiply
- Frequency Spectrum Analysis using FFT (190C)
- Cursors, zoom and real-time clock
- 30 automatic waveform measurements
- Four hours rechargeable Ni-MH battery pack
- Includes a 5000 count true-RMS multimeter and a TrendPlot™ paperless recorder

ScopeMeter for medical applications

The ScopeMeter 190 Series is also available optimized for measurements on medical imaging equipment and video display systems. For more information please visit the Fluke web site.

Automatic capture and replay of 100 screens

Scope users know how frustrating it is to see a one time anomaly flash by never to be seen again. Not with the ScopeMeter 190 Series! Now you can look back in time with a touch of the replay button. In normal use, the instrument continuously memorizes the last 100 screens. Each time a new screen is acquired, the oldest is discarded. At any moment you can "freeze" the last 100 screens and scroll through picture-by-picture or replay as a 'live' animation. Cursors can be used for further analysis. You can even use the advanced trigger capabilities to capture up to 100 specific events. Two sets of 100 captured screens with individual time stamps can be stored for later recall or download to a PC.



On all inputs

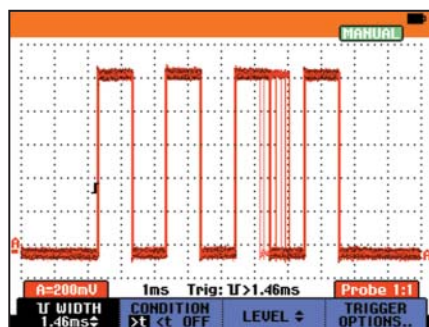


True RMS

ScopeMeter® 190 Series

See dynamic signal behavior instantaneously

The Digital Persistence mode helps to find anomalies and to analyze complex dynamic signals by showing the waveforms amplitude distribution over time using multiple intensity levels and user selectable decay time - it's as if you're looking at the display of an analog, real time oscilloscope! A fast display update rate reveals signal changes instantaneously, useful for instance when making adjustments to a system under test.

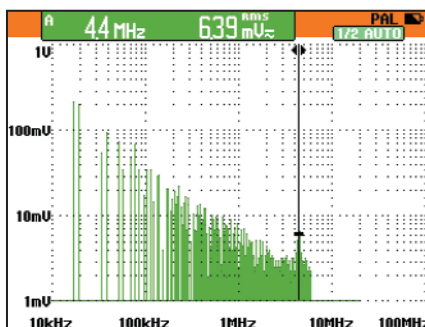


Pulse width fluctuations are clearly visible using Digital Persistence

Frequency Spectrum Analysis 190C

All 190C Color ScopeMeters include Frequency Spectrum Analysis on Fast Fourier Transformation (FFT) analysis as a standard feature.

This makes it possible to identify the individual frequency components contained in a signal. The spectrum analysis function is also handy to reveal the effects of vibration, signal interference or crosstalk. An automatic window function assures optimal windowing, although you may manually select your preferred time window.

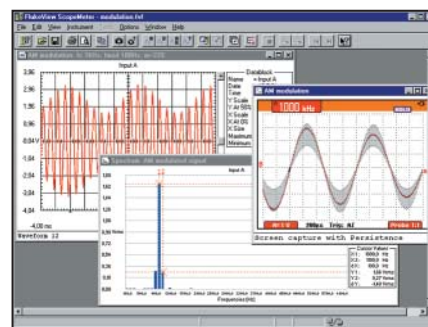


Frequency Spectrum shows an overview of frequencies contained in a signal.

FlukeView® Software for documenting, archiving and analysis

FlukeView® for Windows® helps you get more out of your ScopeMeter by:

- Documenting - transfer waveforms, screens and measurement data from the ScopeMeter to a PC. Print or import the data into your report
- Archiving - create a library of waveforms with your comments for easy reference and comparison
- Analysis - use cursors, perform spectrum analysis or export data to other analysis programs



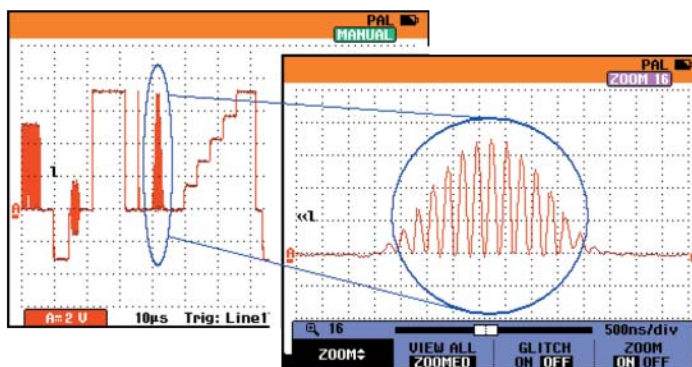
FlukeView Screen

Included Accessories

- BC190 Battery Charger
- BP190 NiMH Battery Pack
- VPS210-G + VPS210-R Voltage Probe
- TL75 Hard Point Test Lead Set
- user's manual (CD-Rom), Getting Started Booklet

Ordering Information

- | | |
|--------------|-----------------------------------------------------------------------------------------|
| Fluke 192B | ScopeMeter
(60MHz, 500 MS/s) |
| Fluke 196B | ScopeMeter
(100 MHz, 1 GS/s)) |
| Fluke 199B | ScopeMeter
(200 MHz, 2.5 Gs/s) |
| Fluke 196C | Color ScopeMeter
(100 MHz, 1 GS/s) |
| Fluke 199C | Color ScopeMeter
(200 MHz, 2.5 GS/s) |
| Fluke 192B/S | 192B + SCC 190 kit option |
| Fluke 196B/S | 196B + SCC 190 kit option |
| Fluke 199B/S | 199B + SCC 190 kit option |
| Fluke 196C/S | 196C + SCC 190 kit option |
| Fluke 199C/S | 199C + SCC 190 kit option |
| SCC190 | FlukeView Software,
OC4USB cable, carrying
case for Fluke 190B and
190C Series |
| SW90W | FlukeView Software |



Thanks to the deep memory, very small parts of the waveform can be studied in full detail using "zoom".

Recommended Accessories



SCC190



C195



OC4USB



i400s



SCC198

ScopeMeter® Accessories

ScopeMeter probes



VPS40



VPS100/200 series



VPS210-R series



VPS210-G series



DP120

	VPS40	VPS200-R	VPS200-G	VPS201	VPS100-R	VPS100	VPS250	VPS121	DP120	PM8918/301
Description	Voltage Probe Set	Voltage Probe Set	Voltage Probe Set	Voltage Probe Set	Voltage Probe Set	Voltage Probe Set	Voltage Probe Set	Voltage Probe	Differential Probe Set	Low Pass Filter Probe
Number and Color	One Black	One Red	One Grey	Red & Grey	One Red	Red & Grey	Red & Grey	One Black	Red & Grey	One Blue
Attenuation	10:1	10:1	10:1	100:1	10:1	10:1	10:1	1:1	200:1, 20:1	10:1
Band Width DC-MHz	40	200	200	200	100	100	75	12	20	4 kHz
Length [m]	1.2	1.2	1.2	1.2	1.2	1.2	2.5	1.2	1.5	2.5
EN 61010-2 CAT II	1000 V	1000 V	1000 V	1000 V	1000 V	1000 V	1000 V	-	1000 V	-
EN 61010-2 CAT III	600 V	600 V	600 V	600 V	600 V	600 V	600 V	300 V	600 V	600 V
ScopeMeter 190 Series		●	●	●	●	●	●	●	●	●
ScopeMeter 120 Series	●						●	● ¹⁾	● ¹⁾	● ¹⁾

1) Using BB 120

	VPS210-R	VPS210-G	VPS212-R	VPS212-G	VPS220-R	VPS220-G	VPS201
Description	Voltage Probe Set		Voltage Probe Set		Voltage Probe Set		Voltage Probe Set
Number and color	1 Red	1 Grey	1 Red	1 Grey	1 Red	1 Grey	1 Black
Attenuation	10:1		10:1		100:1		1:1
Bandwidth DC...MHz	200 MHz		200 MHz		200 MHz		30 MHz
Length (m)	1.2 m		2.5 m		1.2 m		1.2 m
EN 61010-2 CAT II	1000 V		1000 V		1000 V		-
EN 61010-2 CAT III	600 V		600 V		600 V		300 V
ScopeMeter 190 Series	●	●	●	●	●	●	●
ScopeMeter 120 Series			●	●			



PM9091/9092



PM9081



PM9082



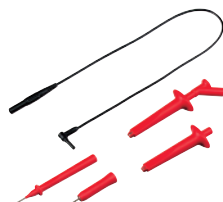
PM9093

	PM9091	PM9092	PM9081	PM9082	PM9093
Description	50 Ω BNC cable set (1Red, 1Grey, 1Black)	50 Ω BNC cable set (1Red, 1Grey, 1Black)	Dual Banana plug male to female BNC	Dual Banana jack male to female BNC	Male BNC to dual female BNC
Length	1.5 m	0.5 m			
EN 61010-2 CAT III	300 V	300 V	300 V	300 V	300 V
ScopeMeter 190 Series	●	●	●	●	●
ScopeMeter 120 Series	● ¹⁾	● ¹⁾	●	● ¹⁾	● ¹⁾

1) Using BB 120



RS200



AS200-R



OC4USB



PM9080



PM9090

RS200	Probe Replacement Set for VPS Series Probes
AS200-R	Probe Accessory Set, Red for VPS Series Probes
AS200-G	Probe Accessory Set, Grey for VPS Series Probes
PM9080	Optical Interface Adapter Cable for serial port
OC4USB	Optical Interface Adapter Cable for USB Port
PM9090	Probe Pin Grabber Flexible Clip for VPS Series Probes
PM9094	Mini Testhook Set for PM8918 Probes
PAC91	Printer Adapter Cable

Battery Packs	
PM9086	NiCd Battery Pack for 90 Series
BP120MH	NiMH Battery Pack for 120 Series + 43B
BP190	NiMH Battery Pack for 190 + 430 Series

All accessories have a one year warranty