

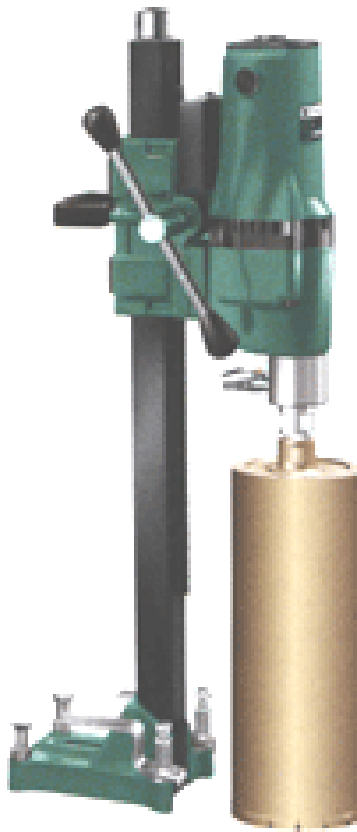


INDUSTRIAS TECHNOFLEX SA

<http://www.technoflex.es/>

Core Drill Machine

Mod. TH-15



Instruction Manual / List of Spare Parts

BUILDING AND PUBLIC WORKS MACHINERY

This manual contains the following sections:

1B- *Operation (English)*

2.- Core Drill Machina Spare Sparts **TH-15**

This manual provides information and procedures to safely operate and maintain this machine. For your own safety and protection from injury, carefully read, understand and observe the safety instructions described in this manual. THE INFORMATION CONTAINED IN THIS MANUAL ARE CORRECT FROM THE MOMENT OF EDITING. HOWEVER THE MANUFACTURER RESERVES THE RIGHT TO MODIFY THE CHARACTERISTICS, WITHOUT PRIOR NOTICE IN CONSIDERATION OF CONTRACT COMMITMENT OF CONTINUOUS IMPROVEMENT.

*Keep this manual or a copy of it with the machine. If you lose this manual or need an additional copy, please contact **INDUSTRIAS TECHNOFLEX S.A.** This machine is built with user safety in mind, however, it can present hazards if improperly operated and serviced. Follow operating instructions carefully! If you have questions about operating or servicing this equipment, please contact **INDUSTRIAS TECHNOFLEX S.A.***

INDEX

<u>Chapters</u>	<u>Pages</u>
1.1 WARNINGS AND SAFETY INSTRUCTIONS	1B-2
1.2 TECHNICAL DATA	1B-2
1.3 INSTRUCTIONS FOR USE	1B-2
1.4 SOLUTION TO PROBLEMS	1B-3
2.1 TH-15 DRILL SPARE PARTS	2-1



WARNING!: Warnings warn of conditions or practices which could lead to personal injury.

1.1 WARNINGS AND SAFETY INSTRUCTIONS



WARNING

READ ALL THE INSTRUCTIONS!

Whenever you use electric tools follow the basic safety precautions in order to reduce fire risk, electric shock or personal injury.

1. Keep the working area clean.
2. Evaluate the environment in the working area. **DO NOT** expose the machine to rain. Keep the working area well lit. **DO NOT** work in an area next to flammable liquids or gases. While on, the engine gives off sparks which could cause fire risk.
3. Wear suitable clothes, use gloves, suitable footwear and protection for the eyes.
4. The earth connection in machines of group 1 is necessary to avoid electric shock risks. The connection electric wire is ready for that function.
5. The connection plug in your line must include earth connection.
6. Keep children and anyone who is not related to this function away from the working area.
7. **DO NOT** force the electric wire, **NEITHER** carry the machine by pulling the wire **NOR** give hard pulls to disconnect it. Keep the electric wire away from heat, heavy machinery and sharp edges.
8. In order to prevent involuntary starting up, **DO NOT** move the machine from where it is when it is still connected to the line. Make sure before connecting the wire to the line that the switch is off.
9. If an extension lead has to be used make sure it is of the required section and it has an earth connection.
10. For more safety, you must work while the machine is connected to a differential of 300 μ A and a speed of 0.1S. The sensitivity of this protector must be checked periodically.
11. Whenever you are not using the machine it must be disconnected as for when you replace the drill or any kind of maintenance is being performed.

Keep these instructions!

1.2 TECHNICAL DATA

Model	TH-15
Voltage	220 V. ~
Frequency	50 Hz.
Power	2600 W.
Speed without Charge	460 / 900 r.p.m.
Max. Acceptable Bit	Ø175 mm.
External Dimensions	920x400x250 mm.
Bit Connection Thread	1 ¼ " UNC
Weight	25,2 Kg.

1.3 INSTRUCTIONS FOR USE

1. How to instal a Bit:

Make sure the thread of the bit and the axle are clean and sparingly supply some grease. Once you are done with it, you can screw the bit to the axle.

2. Drilling:

Make sure the engine is connected to the right voltage and choose the suitable speed. To do so, you will select either high or slow speed, taking care **the engine is off**. We normally use high speed (900 r.p.m.) for bits below Ø 100mm. and slow speed (460 r.p.m.) for bit of bigger diameter. Once this operation is over, we turn on the water stopcock and start drilling without charge, going on slow but firmly until we reach the surface to be drilled.

If during the drilling we notice that the motor speed is reducing, it is due to an excess of charge, so we shall reduce the advance until we regain the normal speed of the engine. Besides, if we notice the engine is smoking or there is a certain burning smell, we must let the machine cool down in a natural way.

This machine has a safety clutch that prevents the engine from burning in case the bit gets stuck.

3. Materials:

If you meet rods while drilling reinforced concrete, the machine will lose speed and the whole column will vibrate, you must then reduce the advance speed until you go back to normal working conditions.

4. Maintenance:

The machine must be checked periodically and any piece which is not in perfect condition must be replaced.

Keep the machine in a clean and dry place whenever it is not about to be used.

1.4 SOLUTION TO PROBLEMS

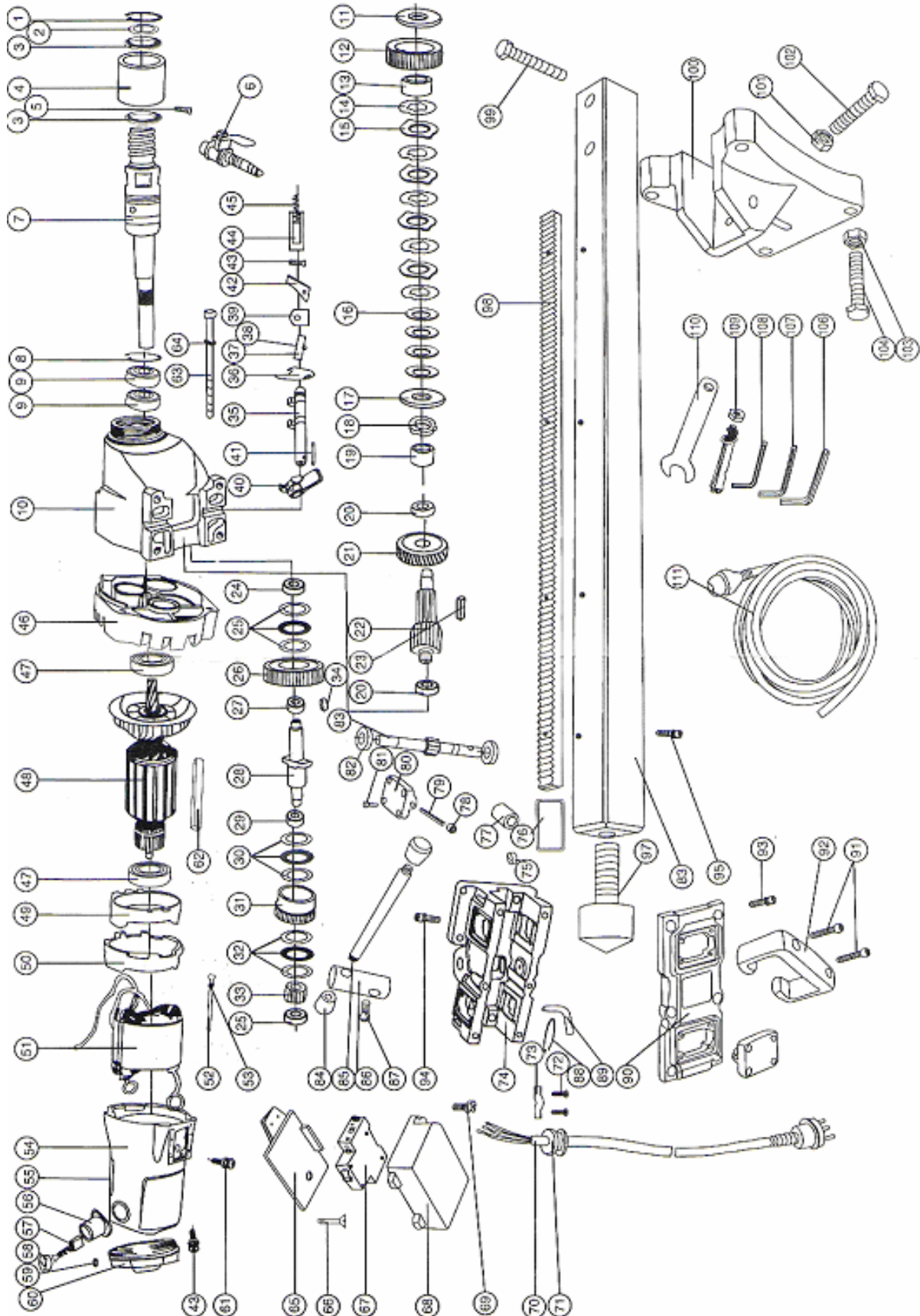
BREAKDOWN	CAUSE	SOLUTION
The engine does not turn.	<ul style="list-style-type: none"> - Electric supply line without voltage - The switch fails. - Ill contact of or worn out brushes. - Defective rotor or stator. 	<ul style="list-style-type: none"> - Check electric supply line and connection plug. - Replace switch. - Clean or replace brushes. - Check and replace rotor or stator.
The engine gives off sparks.	<ul style="list-style-type: none"> - Rotor winding short circuit. - Blocked brush spring. 	<ul style="list-style-type: none"> - Repair or replace rotor. - Adjust or replace brush.
Vibrations while drilling.	<ul style="list-style-type: none"> - The base of the column is not firmly fixed. - There is too much play between the sliding support and the column. - The screws fixing the engine to the support have loosened. 	<ul style="list-style-type: none"> - Check fixation of the column. - Adjust the play. - Check and tighten screws.
Slow drilling speed.	<ul style="list-style-type: none"> - Worn out bit. 	<ul style="list-style-type: none"> - Repair or replace bit.

2 PERFORADORA PERFURADOR

TH-15
TH-15

CORE DRILL

2.1 Perforadora TH-15 / Corell drill TH-15 / Perfurador TH-15



INDUSTRIAS TECHNOFLEX, S.A.

C/Josep Pujol, s/n.
Apartado de correos, 43
E-08191 RUBÍ (Barcelona)-SPAIN

Tel. (+34) 93 588 53 37
Fax (+34) 93 697 37 54
e-mail: teflex@ficsa.com
Internet: <http://www.technoflex.es>



Cód. 4046600020



INDUSTRIAS TECHNOFLEX SA